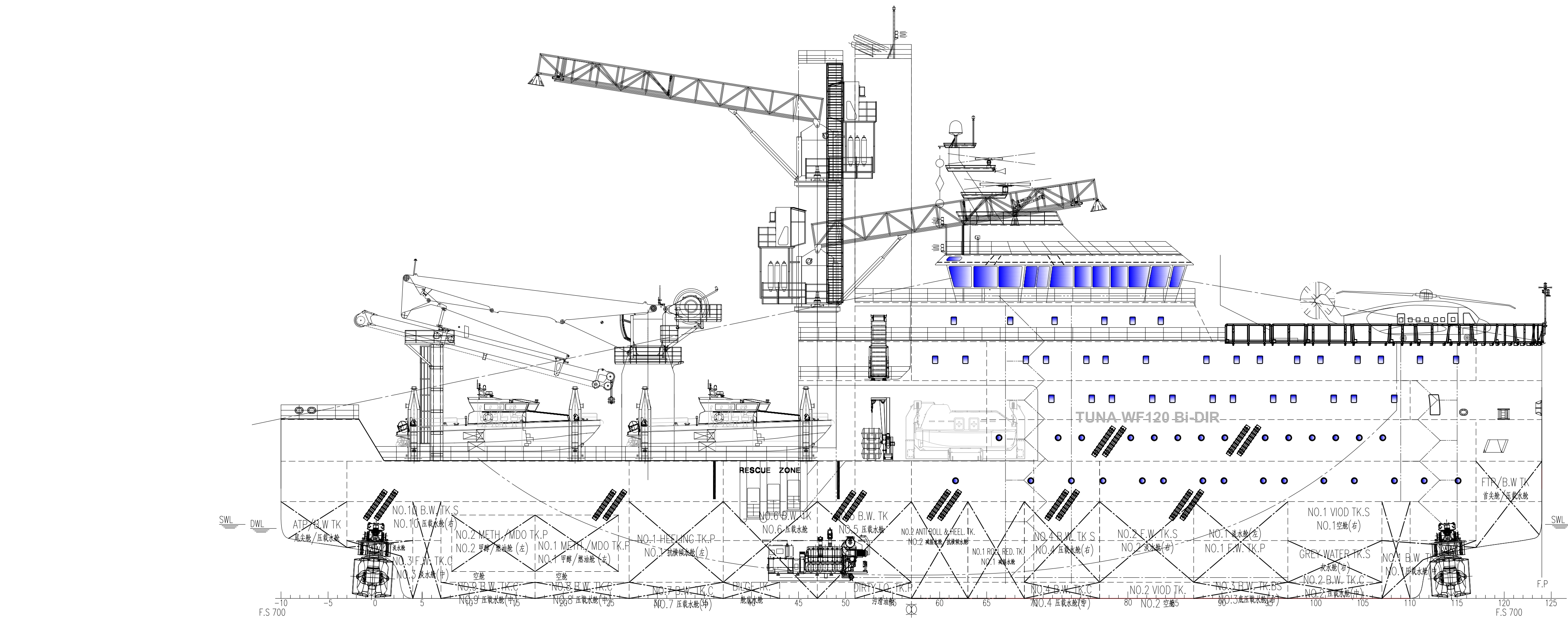


Rev.	Description	DRAWN	Checked	Date
版本号	描述	制图	校核	日期



COMPASS DECK
2550mm dft.

BRIDGE DECK
2200mm dft.

D-DECK
1910mm dft.

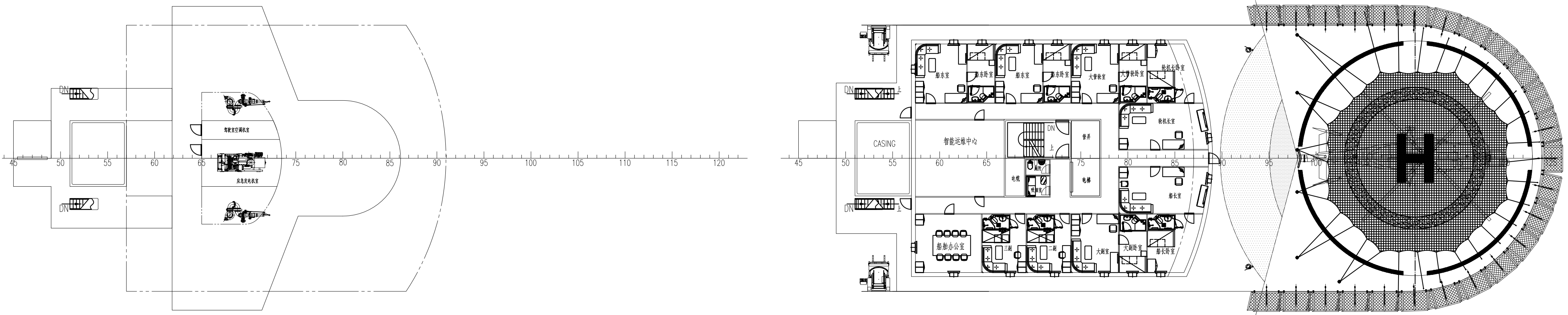
C-DECK
1620mm dft.

B-DECK
1320mm dft.

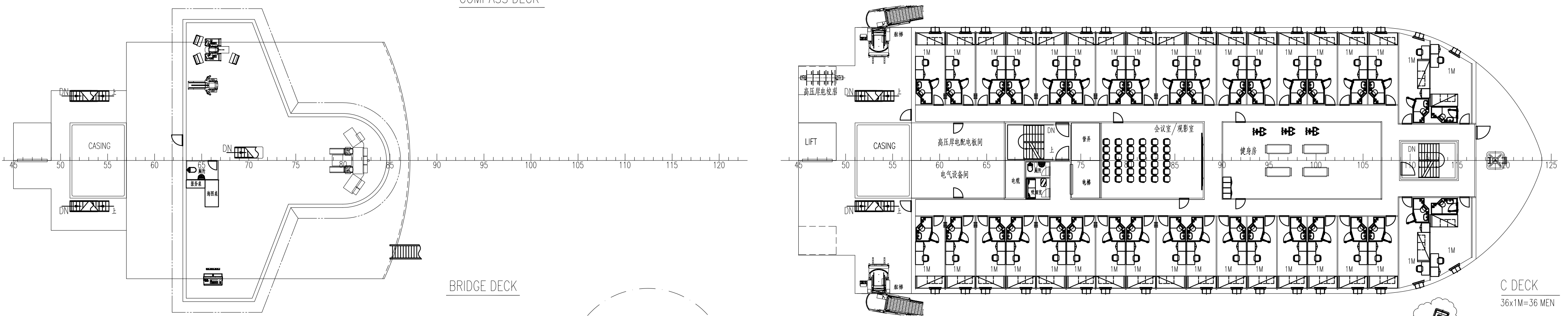
A-DECK
1020mm dft.

MAIN DECK
720mm dft.

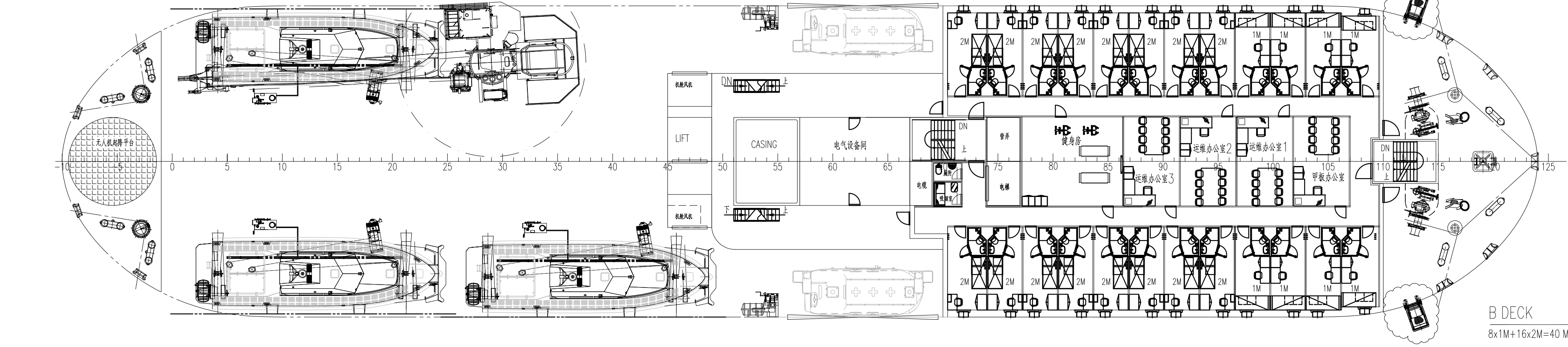
TWEEN DECK
420mm dft.



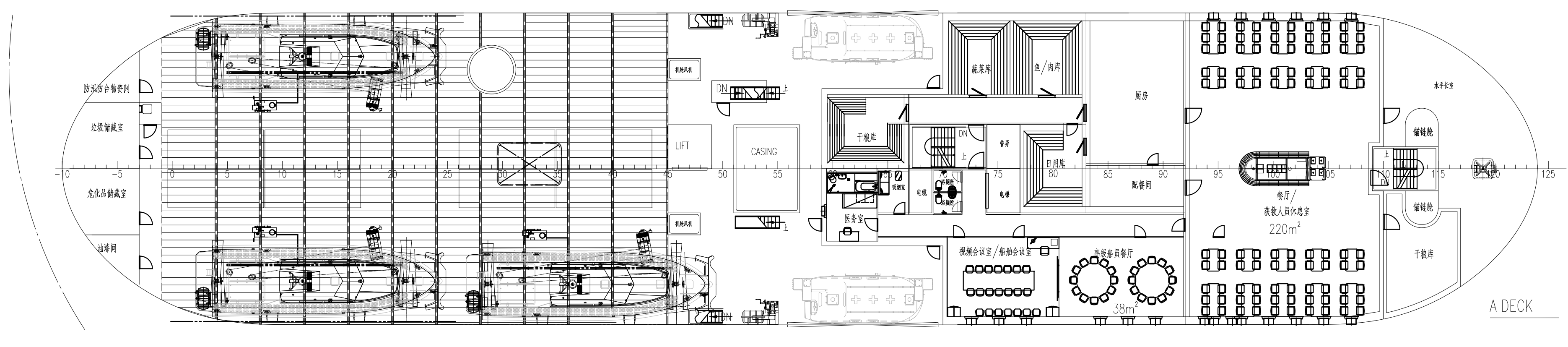
D DECK
8x1M-8 MEN



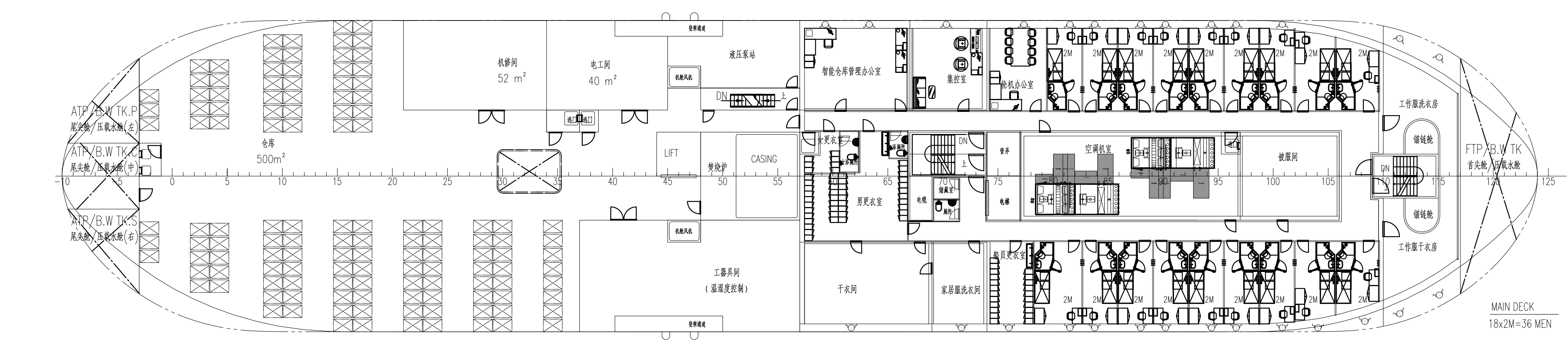
C DECK
35x1M-36 MEN



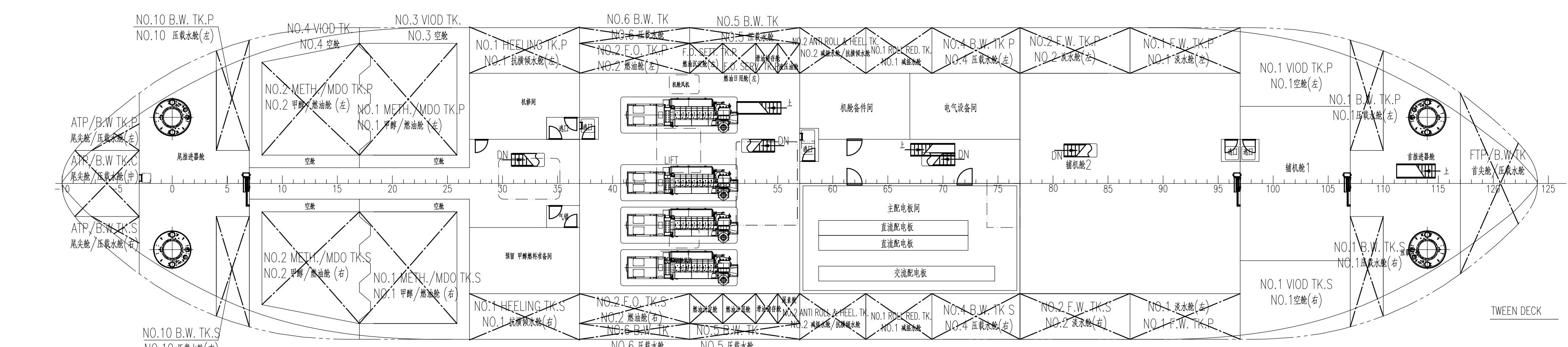
B DECK
8x1M+16x2M=40 MEN



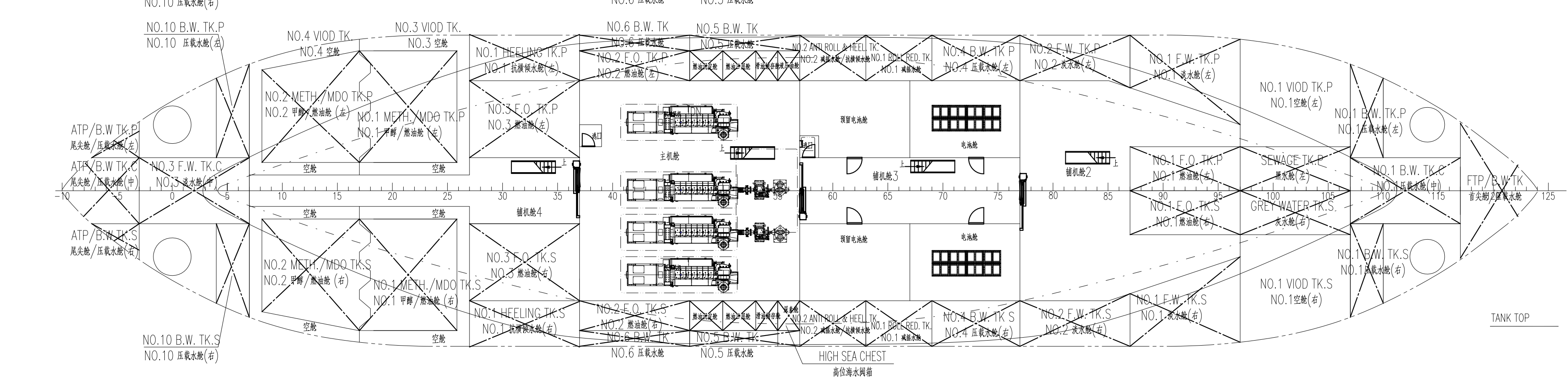
A DECK



MAIN DECK
18x2M-36 MEN



TWEEN DECK



TANK TOP

主要尺度			
总长	L _{oa}	~93.8	m
垂线间长	L _{pp}	86.8	m
型宽	B	19.8	m
型深	D	7.2	m
设计吃水	T _d	5.2	m
夏季载重线吃水	T _s	5.5	m
开敞甲板面积	Open Deck Area	600	m ²
仓库面积	Warehouse	500	m ²
载重量	Deadweight	~2500	t
航速(设计吃水)	Speed @ T _d	~12.0	kn
定员/住舱	Complement/Cabins	120 P/86	

舱 容	
燃 油:	~550 m ³
燃 油(预留甲板舱):	~450 m ³
淡 水:	~450 m ³
压载水:	~1500 m ³

- 船级符号:
- ★ CSA Windfarm Service Vessel; Offshore Engineering Support Ship; Stand-By Ship; Fire Fighting Ship 1; IP; Cyber Security (M,P[SL0]); Loading Computer(S, I); In-Water Survey;
 - ★ CSM AUT-0; Electrical Propulsion System; DP-2(CBNV); Battery(Power-h); AMPS; M/E FR(S,T,P,a); G-EP(AFS, GPR); G-ECO(VIB2, NOI2, CL2); i-Ship(N,M(e1),E,I(s)).